

BeaconBug Quick Start Guide

BlueSense App

1. Install BlueSense from the App Store on your iOS device. iOS 7 is required, but the latest version of iOS is recommended.
2. Since beacons can be used for many different applications, BlueSense is only used for configuring BeaconBugs and a separate application is required to use the beacon for its intended purpose.

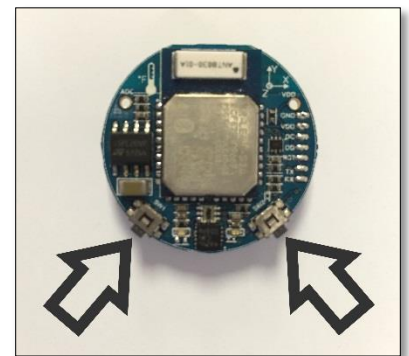
We recommend trying the Beecon app:

<https://itunes.apple.com/us/app/beecon-automate-your-home/id822251888?mt=8>

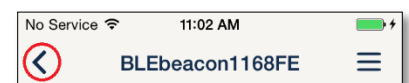
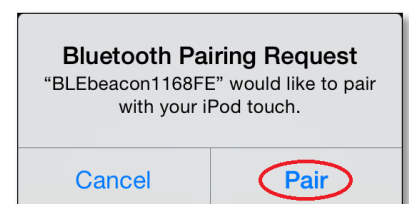
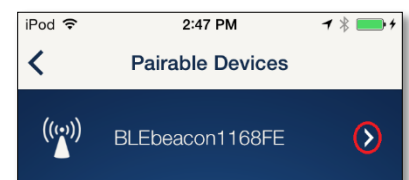
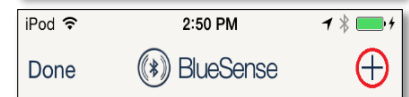
Pairing

1. The device is shipped powered off. Turn the device on by momentarily pressing both buttons at the same time. Both LEDs will blink twice to indicate that the device has turned on.

When powered on, pressing either button individually will turn on an LED, indicating that the device is powered on. When powered off, pressing either button individually will not turn on the corresponding LED, indicating that the device is powered off.



2. Open the BlueSense app on your iOS device and press **Edit**, then press the **+** symbol in the upper right corner to add a new device. The app will then switch to a screen titled Pairable Devices.
3. Hold either button on the device until the blue LED flashes to put it into pairing mode. When the device shows up in the Pairable Devices list press the **>** symbol next to the device name to connect.
4. When prompted with a Bluetooth Pairing Request pop-up, select **Pair** to complete the pairing process.
5. Press the **<** symbol to go back to the main menu.

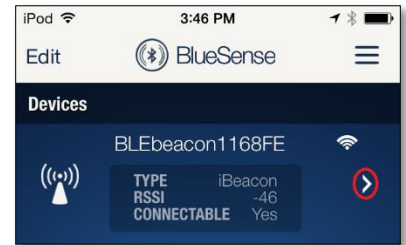


- The BeaconBug has now been paired with your iOS device and is ready to use. Up to 8 iOS devices can be paired with the BeaconBug by following the same pairing procedure. The BeaconBug is now configured as a connectable iBeacon, shown in the image on the right.



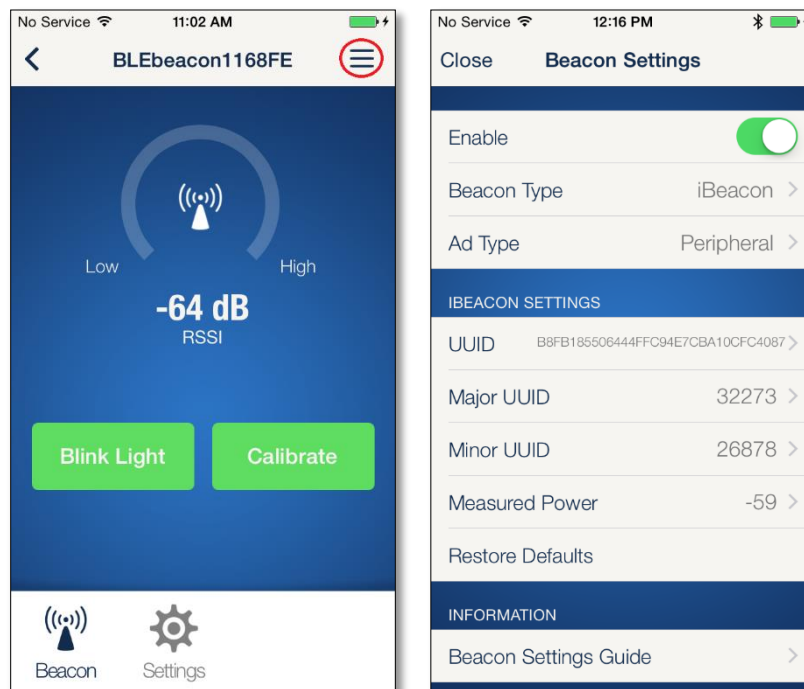
Configuration

- To change the configuration of the BeaconBug press the > symbol next to the device name to connect. If the device is not connectable, click either button (do not hold) – this will make the device temporarily connectable.



- Once connected, tap the menu button (≡) to view the Beacon Settings. On this screen the beacon can be configured for iBeacon, AltBeacon or Eddystone beacon mode (use iBeacon for use with iOS devices), the advertising type can be changed and the beacon UUIDs can be set. Each device ships with a unique set of UUIDs. If changed, these can be restored by selecting Restore Defaults.

Select Beacon Settings Guide for a complete description of the settings.



- On the connected screen the **Blink Light** button can be used to flash the LEDs on the BeaconBug for help identifying a specific device. The **Calibrate** button can be used to calibrate the Measured Power for the device once it has been installed in its intended location.

4. Selecting **Settings** will open the general device settings screen. On this screen firmware updates can be applied and the advertising interval and transmit power can be adjusted. The transmit power can only be adjusted if advanced settings mode has been enabled. Advanced settings mode can be enabled/disabled through the main menu.

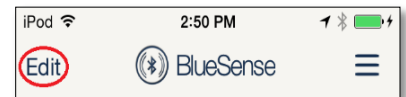
Transmit Power

1. To conserve battery life and also since most beacon applications don't require long range, the BeaconBug has a default transmit power of -6dB. If the specific application requires longer/shorter range the transmit power can be increased to 0dB or lowered to -23dB.

Transmit power can be adjusted on the connected settings screen. The transmit power can only be adjusted if advanced settings mode has been enabled. Advanced settings mode can be enabled through the main menu. The BeaconBug should be calibrated after changing the transmit power.

Changing the Name and Icon

1. The name of the BeaconBug can be changed by pressing the **Edit** button, then tapping on the device name. Tap the icon to change the icon.



Help

1. For help, the BlueSense and BeaconBug User Guides can be accessed through the main menu. Open the main menu from the main screen of BlueSense by tapping the menu button (≡) in the upper right corner.
2. If the beacon can't be found by an iOS beacon app, such as Beecon, make sure the beacon type is set to iBeacon on the Beacon Settings screen.

